

# Lioncourt Homes

## 3 Bedroom Town House

- ❑ Spacious lounge with dining area
- ❑ Kitchen/breakfast room
- ❑ Downstairs cloakroom
- ❑ Study
- ❑ Three double bedrooms
- ❑ Family bathroom
- ❑ Ensuite to master bedroom
- ❑ Single garage with private parking

## Further Information

✉ [sales@lioncourthomes.com](mailto:sales@lioncourthomes.com)

🌐 [www.lioncourthomes.com](http://www.lioncourthomes.com)

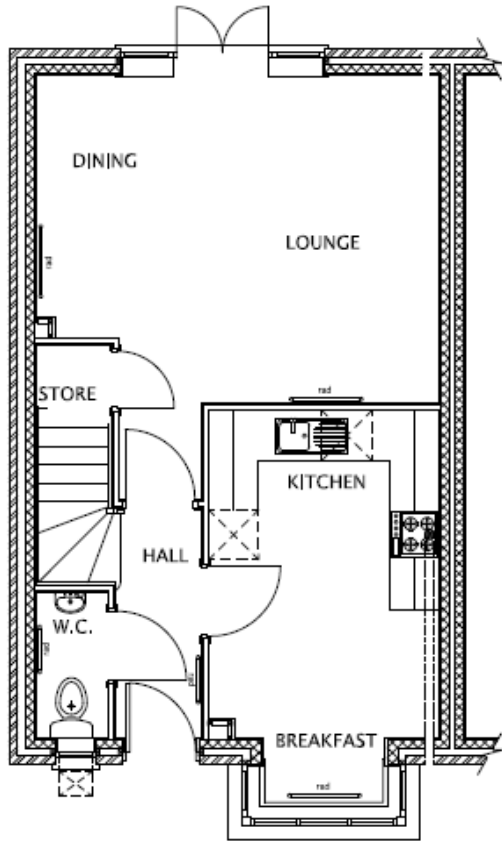
☎ 01782 752509



The Brynwood

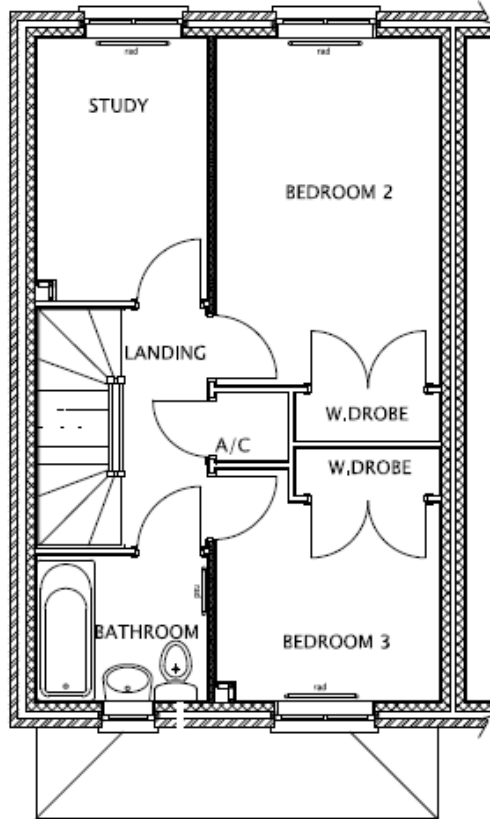
*Important Notice - the above is an artist's impression for illustration purposes only. Lioncourt Homes continuously develop their product and individual features will vary.*

# Lioncourt Homes



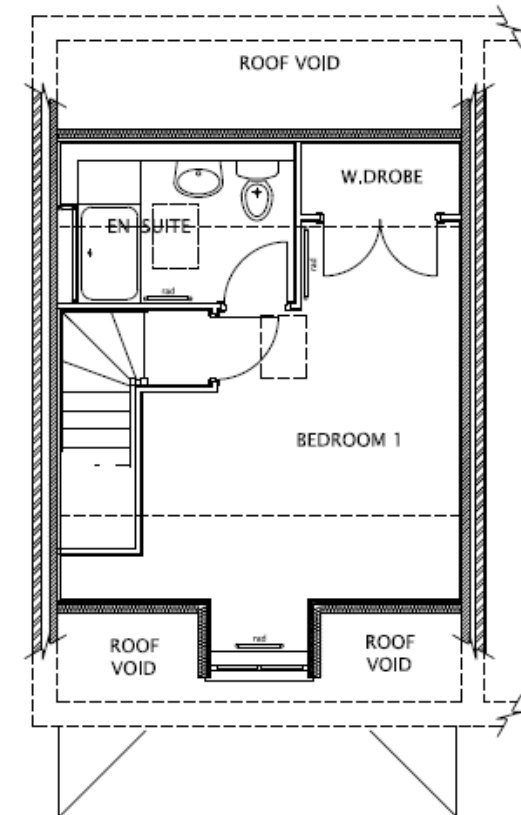
Ground Floor Dimensions (approx)

Kitchen/Breakfast	9'1" x 15'6"†	2.8m x 4.7m†
Lounge/Dining	15'11"† x 13'0"	4.9m† x 4.0m



First Floor Dimensions (approx)

Study	6'9" x 10'5"	2m x 3.2m
Bedroom 2	8'10" x 13'9"	2.7m x 4.2m
Bedroom 3	8'10"* x 7'10"	2.7m* x 2.4m



Second Floor Dimensions (approx)

Bedroom 1	12'8" x 15'1"†	3.9m x 4.6m†
	† Max * Min	

**Important Notice:** These particulars are for illustration purposes only. Lioncourt Homes continuously develop their product and individual features, components, room sizes and house dimensions may vary. Consequently these particulars should be treated as general guidance only and cannot be relied upon as accurately describing any aspect or feature of the property for the purposes of the Property Misdescriptions Act 1991 or at all. Nor do they constitute a contract, part of a contract or a warranty.